

Implicit Projection: Improving Team Situation Awareness for Tacit Human-Robot Interaction via Virtual Shadows

Andrew Boateng, Wenlong Zhang and Yu Zhang

Abstract—Fluent teaming is characterized by tacit interaction without explicit communication. Such interaction requires team situation awareness (TSA) to facilitate. However, existing approaches often rely on explicit communication (such as visual projection) to support TSA, resulting in a paradox. In this paper, we consider implicit projection (IP) to improve TSA for tacit human-robot interaction. IP minimizes interruption and can thus reduce the cognitive demand to maintain TSA in teaming. We introduce a novel process for achieving IP via virtual shadows (referred to as IPS). We compare our method with two baselines that use explicit projection to maintain TSA. Results via human factors studies demonstrate that IPS supports better TSA and significantly improves unsolicited human responsiveness to robots, a key feature of fluent teaming. Participants acknowledged robots implementing IPS more favorable as a teammate. Simultaneously, our results also demonstrate that IPS is comparable to, and sometimes better than, the best-performing baselines on information accuracy.

I. INTRODUCTION

Over the past decade, there have been accelerated growths and advancements in robotic research, making it no longer far-fetched to envision robots as part of our lives. One of the most appealing applications involves teaming domains where humans and robots complement each other to achieve complex tasks [1]. Teaming often requires coordination that may be facilitated by either explicit or implicit communication. While explicit communication (such as using natural languages) is highly effective at conveying information, it requires substantial attention from the receiver, leading to interruptions and thus less fluent teaming. Consequently, effective teaming is often characterized by tacit interaction with little or no explicit communication [2]. To facilitate tacit interaction, it is critical for the team members to maintain team situation awareness (TSA) so that each member can separately maintain and predict the team status for fluent teaming [3]. Paradoxically, the existing interface for human-robot interaction (HRI) often relies on explicit communication to maintain TSA [4], [5], [6], which introduces interruptions to teaming in the first place!

The challenge of maintaining TSA with implicit (non-explicit) communication has been left mostly unattended. In our work, we take a generic stance and refer to explicit communication, regardless of its modality, as communication with an established channel [7], which implies that the

intentions of the sender to convey information *and* of the receiver to *expect* information should both be present. In implicit communication, in contrast, the receiver plays a passive role such that less attention would be drawn.

Consider a scenario in a semi-automated car assembly shop where a human worker, Mark, works along with a partner robot. Each agent has its own tasks in hand but must also collaborate occasionally to make progress. In one scenario, Mark sends the robot to fetch a hot soldering rod. Mark needs to attend to the rod soon after the robot arrives so must keep track of *when, where, and how* the robot returns to timely and safely handle the rod. For productivity, Mark would context switch to other tasks (e.g., reading the assembly manual) before the robot returns instead of idly waiting for the rod. However, focusing on other tasks can potentially cause him to lose track of the moving robot, resulting in the loss of TSA (i.e., from which direction the robot is approaching and the distance between the robot and Mark in real-time) and safety risks (i.e., thermal burns). Using explicit communication to address the situation may be the first thought. However, having the robot display its position via explicit visual communication, such as using a virtual map on a computer or portable device, would be distracting as it requires Mark to frequently check the map, while having the robot announce its arrival via prompts or sounds would be insufficient for the continuous TSA maintenance requirement. In such cases, we would benefit from an approach that uses implicit communication to enable Mark to maintain continuous TSA and timely responsiveness to the robot without diverting much attention.

However, coming up with an implicit communication interface that can support and positively impact the maintenance of TSA to address such a gap is challenging. Since information needs to be continuously conveyed to the receiver (albeit not necessarily perceived as communication), the interface must be minimally intrusive to the receiver. In this work, we introduce implicit projection (IP) via virtual shadows (IPS). First, IPS is an implicit visual communication method since shadows are not normally perceived by their viewers as a form of communication: they are simply part of the natural environment. This also implies that they are minimally intrusive. In addition, shadows can provide rich real-time information about objects, which makes them ideal for implicit communication. Last but not least, given our familiarity with shadows, they can be instantaneously interpreted [9]. In the scenario above, we can apply IPS by projecting a virtual shadow of the robot into the view of Mark to help him monitor the robot in real-time and maintain

A. Boateng and Y. Zhang are with the School of Computing and Augmented Intelligence, Ira A. Fulton Schools of Engineering, Arizona State University, Tempe, AZ 85281, USA. Email: {aoboaten, yu.zhang.442}@asu.edu.

W. Zhang is with the School of Manufacturing Systems and Networks, Ira A. Fulton Schools of Engineering, Arizona State University, Mesa, AZ 85212, USA. Email: wenlong.zhang@asu.edu.

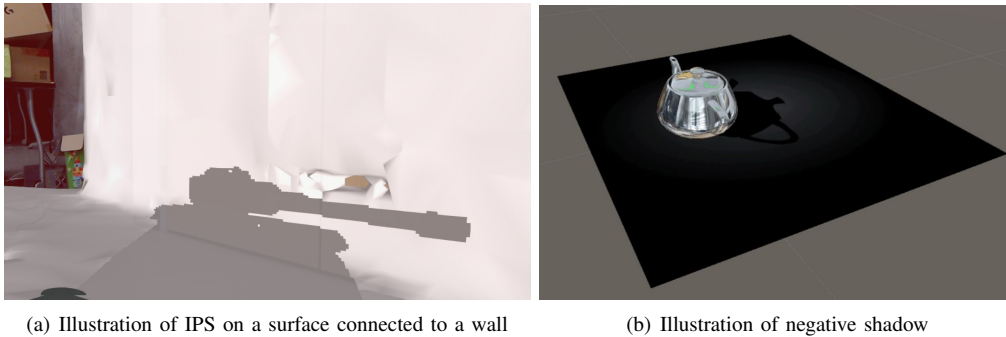


Fig. 1: (a) A virtual shadow of a 3D model of a tank generated by IPS on a flat surface connected to a wall and (b) an illustration of negative shadow [8]. One limitation of negative shadow is that it only works on flat surfaces. This is because the “shadow” is actually a dark colored 2D model of the object that is placed on a plane to give the illusion of a shadow: the surroundings of the 2D model is illuminated. Shadows created using negative shadow cannot adapt to complex surfaces.

continuous TSA, even when the robot moves out of sight.

To realize IPS, we use augmented reality (AR) to generate virtual shadows. However, there are significant scientific and engineering challenges to use virtual shadows:

- *Realistic Shadow Projection*: Shadows are often created using approximate methods such as negative shadow due to their simplicity [8] (see a visual comparison of our method and negative shadow in Fig. 1). However, unrealistic shadows can lead to misinterpretation and hence misinform TSA.
- *Naturalistic Shadow Projection*: To project virtual shadows into a human receiver’s view, the virtual light source must be dynamically reconfigured. This can have a negative effect on the perception of the naturalness of the shadow and its dynamics, leading to misinterpretation, unwarranted distraction, discomfort, and distrust.

Our contribution in this work is four-fold. First, we identify an important gap of using implicit communication in visual communication. In particular, we introduce *implicit projection* (IP), propose a way to implement IP using virtual shadows (IPS), and apply IPS to an HRI scenario for maintaining TSA to achieve tacit interaction. This is in contrast to the traditional visual communication methods that predominantly rely on explicit communication [10], resulting in less effective teaming. Second, we develop a novel engineering process for generating realistic shadows with Microsoft HoloLens, which includes environment modeling and virtual shadow rendering¹. It generates shadows by superimposing a cutout model onto the real-world from a 3D scan of the environment. The result is high-fidelity shadows generated according to the environment layout as with real shadows. See Fig. 1 for an illustration of virtual shadows generated by such a process. Third, we propose a method for achieving naturalistic shadow dynamics under changing light source configurations by integrating a mapping mechanism with a control method. The virtual shadows resulting from such a method are approximately true to the real object’s dynamics while retaining smoothness. More intuitively, the shadow mapping mechanism makes sure that the robot’s state

(such as its velocity and rotational speed) is *effectively* captured by the virtual shadow and the control method ensures smoothness to minimize the negative effects on perception during interaction. Fourth, we integrate IPS with a physical robotic system and evaluate it by comparing with baselines that use explicit projection. Results validate our hypotheses and demonstrate the effectiveness of IPS in facilitating tacit interaction in proximal HRI scenarios.

II. RELATED WORK

In linguistics, explicit communication [12] is defined as information conveyed via spoken or written words. Where multiple modalities are concerned, explicit communication can be extended to refer to information transferred through an established channel [7]. Such a characterization implies that both the sender and receiver must be aware of the communication being made as information transfers through the channel: the intent of communication is mutual. We follow this extended definition in our work to distinguish between explicit and implicit communication, regardless of its modalities. Note that such a definition is also consistent with that commonly adopted in HRI research [13], [14] with a special focus on the *receiver*. For example, legible and explicable motions [15], [16], [17] are considered implicit ways of communication (via communicative behaviors) since the receiver may not realize the communicative intent of the sender. In this regard, IPS addresses the challenge of realizing *implicit visual communication* using virtual shadows, which is a first of its kind. With a properly designed interface, implicit communication draws less attention from the receiver who engages in a passive role during communication, making it less distracting [18] and more desirable for maintaining TSA in teaming.

As an emerging human-computer interaction (HCI) interface, Augmented Reality (AR) empowers us to visually perceive and interact with objects that are not present in the physical world [19]. Due to the intuitive appeal of such visual augmentations, AR has been used successfully and gaining popularity in various domains [20], such as military [21], marketing [22], education [23], manufacturing [24], medical [25], entertainment [26], and robotics [27]. Most prior

¹This part was presented as a Late-Breaking Report at HRI 2021 [11].

work (e.g., [28], [10], [29]) uses AR as an explicit visual communication method. Our work on implicit projection thus bridges an important gap in visual communication. Prior work identified that environment complexity, such as occlusions from physical objects, affects the fidelity of the virtual depiction of AR objects [30]. IPS presents a process for realistic and naturalistic virtual shadows of high-fidelity by generating them directly on the true environment layout.

AR has been used in numerous applications. Our interest aligns with those that relate to content creation [31], such as making VR objects more realistic and interactable. For example, Wang et al. [32] make use of lighting and shading of real scenes to modify AR objects to make them more lifelike. Such AR applications in robotics are also gaining popularity. For example, AR objects have been used as part of the interface to facilitate human-robot interaction [33]. AR has also been used to project virtual shapes onto a physical object to highlight the desired places to insert parts for assembly tasks [10]. Makris et al. [29] develop a method to project the trajectory of the effector and other information of a robot onto wearable devices before the robot starts moving. In [30], [34], the authors introduce an AR application that assists users having little to no knowledge in robotic systems with programming robot motions and recovering from failures. To the best of our knowledge, no prior work studied the application of AR for maintaining continuous TSA in challenging proximal HRI scenarios where the robot may frequently move out of sight. Since our work is focused on visual communication, other modalities, such as sounds and haptics [35], [36], are out of the scope.

III. APPROACH

To concretize the technical discussion, we consider a proximal HRI scenario as illustrated in Fig. 2 where a robot works behind a human teammate and must occasionally interact with the human, similar to the motivating scenario. For timely responsiveness, it is critical for the human to continuously monitor the robot to maintain real-time TSA to facilitate the interaction (i.e., responding to the robot’s arrival). To simplify the technical development, we assume that the human would not need to change his viewing direction during the task. Also, we assume that the robot would always operate behind the human (i.e., outside the human’s field of view). Such a situation may occur when the human must context switch to reading from a computer screen while not responding to the robot. The relaxation of these assumptions is discussed in Section VI. To help the human maintain real-time TSA in such scenarios, IPS projects a virtual shadow of the robot that is always observable to the human.

A. Shadow Mapping

One of the challenges to rendering the virtual shadow always observable is that the HoloLens has a small field of view (FOV) of 34° with a maximum distance of $5m$ from the human to the holograms (i.e., AR objects). To achieve this, we use *Shadow Mapping* to project the robot’s position from outside the human’s FOV in the real-world to



Fig. 2: Illustration of the problem setting where the top left shows the human’s view through HoloLens.

its desired shadow position in the virtual world within the FOV of HoloLens. Furthermore, to ensure that the shadow is *informative* about the robot’s status, we would like the dynamics of the shadow to effectively capture the dynamics of the robot. Intuitively, when the robot moves faster (slower), the shadow should also move faster (slower); for sufficiently small enough position updates, such as when the robot moves left, right, up, or down, the shadow should also move likewise. To satisfy these requirements while ensuring the shadow is always visible, we choose to implement a linear mapping between the robot’s position and the shadow’s position in their respective polar coordinate systems. First, we consider the real-world outside the human’s FOV to be a semi-circular area (i.e., $\theta_w = 180^\circ$) with a pre-defined radius l_w (i.e., the maximum distance from the human to the robot where the robot’s status is of concern to the human), and the virtual world as a sector with apex angle $\theta_v = 34^\circ$ and $l_v = 5m$. The mapping is specified as follows:

$$r_v = l_v - r_w \frac{l_v}{l_w}, \quad \beta_v = \beta_w \frac{\theta_v}{\theta_w}, \quad (1)$$

where r_w and β_w above refer to the polar coordinates of a point in the real-world, and r_v and β_v refer to the polar coordinates of the corresponding point in the virtual world. Note that r_v is a decreasing function of r_w since the proportion of visible shadow should grow as the robot moves closer to the human. Such a mapping is illustrated in Fig. 3 where the human is at the intersection of the two worlds illustrated as a green dot. We also introduce the global coordinate system as a Cartesian system (i.e., φ_x and φ_y).

B. Shadow Projection

The 3D development platform (Unity) for HoloLens uses a depth buffer system to keep track of all surfaces close to the light source. If any surface comes in direct line with the light source, the surface will be illuminated (similar to ray tracing). The unilluminated surface therefore creates the shadow effect [37]. The benefit of using such a process is so that the shadow generated will be realistic as it naturally caters to the virtual surface onto which the shadow is projected (see Fig. 6). This means that we will only need to focus on projecting the shadow to the desired shadow position (P_d) without having to worry about the geometry of the virtual environment model, as long as the model is an

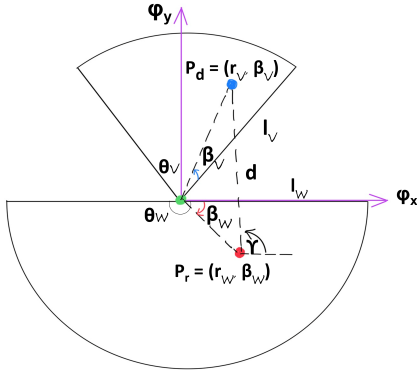


Fig. 3: Projection from the robot's position (r_w, β_w) in the real-world to its shadow position (i.e., the top of the robot's shadow) in the virtual world (r_v, β_v) .

accurate representation of the real-world. Next, we discuss how to project the robot's position, denoted as P_r , to its desired shadow position as expressed in Eq. (1), denoted as P_d , by setting the tilt and pan of a directional light source. For a given P_d and height (h) of the robot, the tilt α of the light source to generate a shadow to reach P_d is given below and illustrated in Fig. 4, where $\alpha = \tan^{-1}(\frac{h}{d})$:

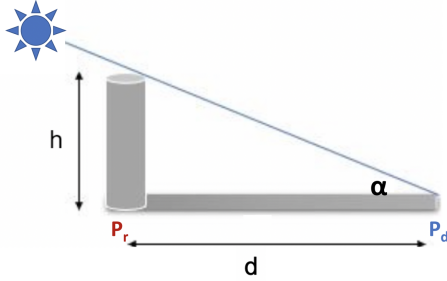


Fig. 4: Relationship between the tilt α of the light source, robot height, h , and shadow-robot distance (d).

Adjusting the tilt of the light source would increase or decrease the shadow length as needed. d is the Euclidean distance between $P_r = (r_w, \beta_w)$ and $P_d = (r_v, \beta_v)$:

$$d = \text{euclidean}((r_w, \beta_w), (r_v, \beta_v)) \quad (2)$$

We compute the pan (γ) of the light source based on Fig. 3.

C. Shadow Smoothing

Even though we can derive the exact tilt and pan of the light source to project the top of the robot to the desired shadow position as discussed above, the magnitudes of the updates to these angles for when the robot moves in different parts of the real-world can differ substantially. For example, for the same amount of shadow movement, the smaller the shadow-robot distance (i.e., d) is, the more the light source must update its tilt (α). Significant directional changes of the light source can cause confusion and discomfort, which could negatively impact the perception of the shadow and the maintenance of TSA. We reduce such effects by smoothing the dynamics of the virtual shadow.

We choose to apply a PID control method that is often used in robotics to generate smoother state transition processes [38]. It is a combination of Proportional (P), Integral (I), and Derivative (D) control actions. P is proportional to the error between a set point and the observed process variable. I considers the past errors and integrates them over time to correct the accumulated error. D acts on temporal error difference. The control function of PID is given by:

$$u(k) = K_p e(k) + K_i \sum_{\tau=0}^k e(\tau) + K_d (e(k) - e(k-1)), \quad (3)$$

where K_p , K_i and K_d are the coefficient 2×2 matrices of P , I and D , respectively. For shadow smoothing, with changes to the light source angles (i.e., u) as our control inputs and given the robot's position in the real-world (i.e., P_r), we must drive the shadow towards the desired output P_d . Such a model can be modeled with the plant as follows:

$$x(k+1) = f(x(k), u(k), \Delta P_r(k)), \quad (4)$$

where x is the virtual shadow position, and $u = [\Delta\alpha, \Delta\gamma]^T$ encodes changes to the tilt and pan angles of the light source that we are actively controlling. ΔP_r is the change in the robot's position in the real-world, which is treated as an exogenous input. In this paper, we consider f as a first-order discrete-time dynamic model:

$$x(k+1) = x(k) + \begin{bmatrix} -a & 0 \\ 0 & b \end{bmatrix} u(k) + \begin{bmatrix} -h & 0 \\ 0 & g \end{bmatrix} \Delta P_r(k), \quad (5)$$

where a , b , h , and g are positive constants. These values are chosen to capture $\Delta P_r(k)$ and $u(k)$'s expected relationship with the change of the shadow position from step k to $k+1$. We assume that $\Delta P_r(k)$ is expressed in the polar coordinate system of the real-world.

Now, we can derive a simple PID controller using Eq. (4) with the setpoint at step k being $P_d(k)$. This is the position we would like the shadow to be rendered. $x(k)$ represents the shadow position actually rendered at step k . We assume that both $x(k)$ and $P_d(k)$ are expressed in the polar coordinate system of the virtual world. The difference between $P_d(k)$ and $x(k)$ then leads to the error $e(k) = P_d(k) - x(k)$.

D. Shadow Rendering

To generate realistic shadows in IPS, shadow rendering is composed of environment modeling, shadow generation, and shadow superimposition. Our environment modeling technique uses the semi-autonomous nature of SLAM-like modeling (provided by HoloLens). To be able to find anchoring surfaces in the real world to place virtual objects (Holograms), the HoloLens constantly maps its environment. This also ensures that when there is a change in the environment (e.g., when an object is moved in the environment), it will be updated to the new arrangement.

In order to make use of the 3D map created by the HoloLens, we use vertex-lighting technique to create a custom shadow-receiving shader. Although pixel lighting provides more details by calculating the illumination for each pixel, it is computationally expensive. In contrast, by using

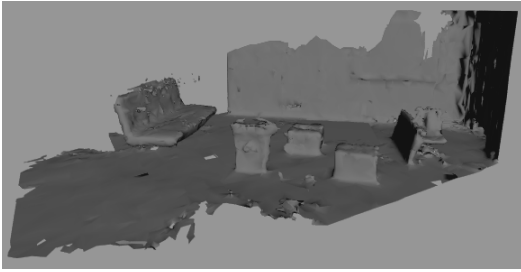


Fig. 5: 3D scan by HoloLens for environment modeling.

vertex lighting, we calculate illumination at each vertex of a model and then interpolate the resulting values over the faces of the models, resulting in a more efficient solution. We apply this shader to the exported HoloLens-generated map (see an example in Fig. 5) and enable its shadow receiving properties. This creates our transparent shadow-receiving model of the environment (see an example in Fig. 6 for the environment model in Fig. 5). Finally, this model is superimposed onto the real-world to render the shadow.

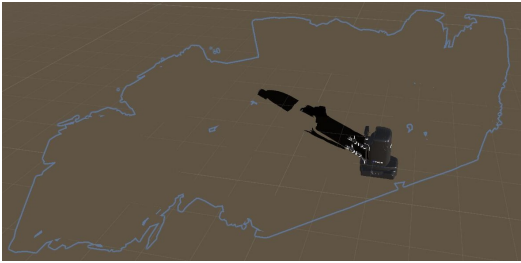


Fig. 6: A transparent shadow-receiving model of the environment in Fig. 5 for shadow rendering.

IV. EXPERIMENTAL DESIGN

We aim to validate the benefits of implicit communication with respect to explicit communication at maintaining TSA and facilitating *tacit* HRI. Hence, our experimental design focuses on comparing with other visual projection methods instead of identifying the most effective communication modality under our experimental scenario. The scenario considered is shown in Fig. 2. It involves a human requesting a robot for a delivery service or picking up a delivery from the robot. The interaction is tacit here in the sense that the robot would not announce its arrival. The responsiveness of the human to the robot is determined by the time between the robot’s arrival and the human acknowledging its arrival. The other tasks of the human while not responding to the robot involve document reading. Such context switching can result in the loss of TSA and reduced responsiveness to the robot. Since we are also interested in evaluating the accuracy of the TSA maintained, we divided each participant session into two parts. The first part involved the delivery tasks as discussed above and the second part involved more detailed questions about the TSA, such as estimation of the robot’s position and prediction of its next destination. We refer to tasks in the second part as *estimation* tasks. We used Kinova Movo in this study.

We compare IPS against two baselines that use explicit visual communication with AR. We carefully selected the baselines based on common practices used for displaying dynamic objects [39], [40], [41]. All baselines and IPS display a sufficient amount of information about the robot for the tasks considered. The information is projected continuously to the human teammate. IPS and the baselines are described in more details below:

- 1) **Map** displays a top-down and real-time view of the robot on the map (Fig. 7 (left)). The pink sphere indicates the human and the robot is shown in black, with the arms in the front.
- 2) **Arrow** uses an arrow that always points to the robot in real-time (Fig. 7 (right)). The arrow pans in a plane.
- 3) **IPS** uses a virtual shadow of the robot to communicate real-time information (Fig. 7 (middle)). A video that illustrates how IPS works is included.

Both Map and Arrow appear frequently in real-world applications. Due to our familiarity with these baselines, they are chosen to best represent explicit projection methods. Our experimental design is used to verify these hypotheses:

- *H1. IPS improves responsiveness to the robot compared to the baselines while remaining comparable to the baselines in terms of cognitive workload.*
- *H2. IPS maintains accurate TSA that is comparable to the baselines.*
- *H3. Robot with IPS is viewed more favorably as a work partner than the baselines.*

We deployed all three methods onto HoloLens and placed the robot outside the participant’s field of view (FOV). Each participant was informed about the delivery tasks and the robotic partner. The participant and the robot were supposed to complete the delivery tasks together in the least amount of time so that the participant knew that timely responses to the robot after its arrival were important. A response was recorded when the participant acknowledged the robot’s arrival (for delivery service or to deliver). The time elapsed since the robot’s arrival was used to quantify the responsiveness to the robot (i.e., the less the better). Note that responsiveness heavily depends on the quality of TSA maintenance. At the same time, the participant was given some document to read and was advised to not turn to observe the robot during the study while wearing HoloLens. After the delivery tasks, the participant was then presented with several estimation tasks to evaluate the accuracy of TSA. To prepare for the tasks, each participant was given a printed map of the space in a discretized form for position identification (see Fig. 8). The map has numbers on it indicating different parts of the space. During the estimation tasks, questions such as the robot’s current position and predicted destination were asked at certain time points as the robot moved around in the space in preprogrammed paths. The participant was tasked to choose the number on the map to match the estimation or prediction. The questions were divided into *static perception* (estimating the robot’s current position), *post-movement perception* (estimating the



Fig. 7: Participant’s view in IPS and the two baselines: Map (left), IPS (middle), Arrow (right).

robot’s position after movement), and *prediction* (predicting the destination of the robot). We computed accuracy as the Manhattan distance between the participant’s estimation and the ground truth. The smaller the distance was, the more accurate the estimation was.

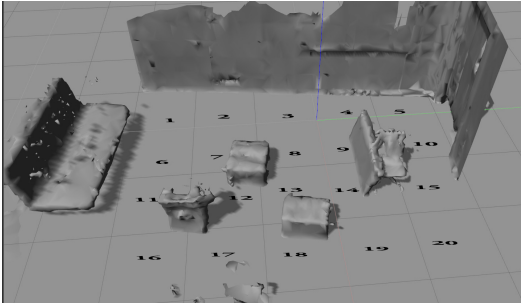


Fig. 8: Discretized environment for our study.

24 CS students in their senior year participated in a within-subjects study. They were made up of 14 female and 10 male students. Each participant participated in three sessions, one for each method. We recorded a video for each part of a session (with 2 parts in each session). The first video for the delivery tasks was used to measure the waiting time between the robot’s arrival and the participant’s response. The second video was recorded for the estimation tasks. This resulted in 6 videos per participant and a total of 144 videos recorded. However, due to objects and robot blocking the camera, or participants turning to observe the robot during the study, we discarded the data from 7 participants, which left us with the remaining 17 participants for result analyses. After all the three sessions, each participant was given a final survey that included an AttrakDiff survey and the participant’s preferences towards the robot as a work partner and towards the different projection methods with respect to their naturalness and user friendliness. In the AttrakDiff survey, the participants were asked to rate the methods based on different qualitative metrics on a scale of 1 to 7.

V. RESULTS AND ANALYSES

An alpha level of 0.005 is used for all statistical tests.

1) *Responsiveness to Robot*: Fig. 9 presents the results for the waiting time of the robot between when it arrived at the delivery location and when the participant responded. We observe that participants were much faster to react to the robot when IPS was used. Paired Student’s t-tests gave $t(16)=2.12, p=.003$ between IPS ($M=10.3, SD=9.18$) and

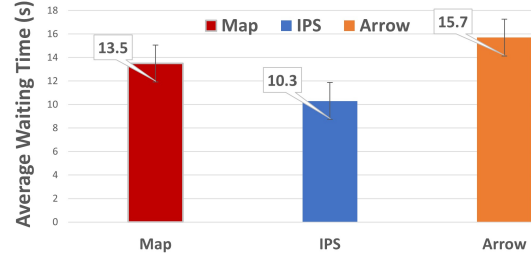


Fig. 9: Waiting times for robot waiting for delivery.

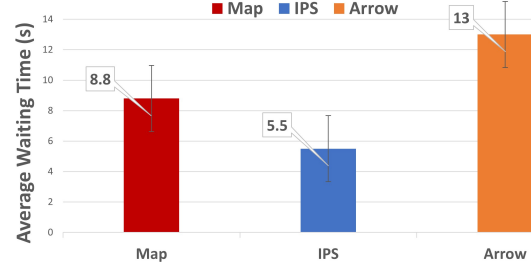


Fig. 10: Waiting times for robot waiting for pickup.

Map ($M=13.5, SD=7.9$), and $t(16)=2.12, p=.002$ between IPS ($M=10.3, SD=9.18$) and Arrow ($M=15.7, SD=8.8$). Fig. 10 presents the results for the waiting time of the robot between when it arrived at the pickup location on the participant’s request for a delivery and when the participant responded. Similar results were observed. T-tests resulted in $t(16) = 2.13, p = .003$ between IPS ($M=5.50, SD=2.11$) and Map ($M=8.80, SD=3.62$), and $t(16)=1.75, p < .001$ between IPS ($M=5.50, SD=2.11$) and Arrow ($M=13.04, SD=4.66$). These results verified that the responsiveness to robot with IPS was significantly better than the baselines, which supported part of $H1$ regarding responsiveness.

2) *TSA Accuracy*: Fig. 11 presents the results with respect to how accurately each method maintained TSA in the estimation tasks. Generally, IPS did better than Arrow and was on a par with Map. Map did well, which was likely due to the fact that participants were generally familiar with maps in one form or another in real life. Arrow performed the worst as expected since the depth information must be inferred from how fast the arrow moved, which made it difficult for the participants to accurately estimate the robot’s position and changes in position. It can be seen from Fig. 11 that IPS performed comparably to Map in *perception* tasks, with Map having a slight edge in post-movement perception. T-tests revealed no significant differences between IPS and Map ($H2$). It is however interesting to note that IPS proved to provide more context information for TSA in *prediction*

and did much better there than the baselines in *prediction* as shown in Fig. 11. We attributed such performance to better TSA since *prediction* required the participants to maintain the context of movements (i.e., which direction the robot was heading for), instead of solely the position. Student’s paired t-tests on *prediction* resulted in $t(16)=2.19$, $p < .001$ between IPS ($M = 0.24$, $SD = 0.42$) and Arrow ($M = 0.57$, $SD = 1.08$), and $t(16)=2.12$, $p < .001$ between IPS and Map ($M = 0.32$, $SD = 0.55$).

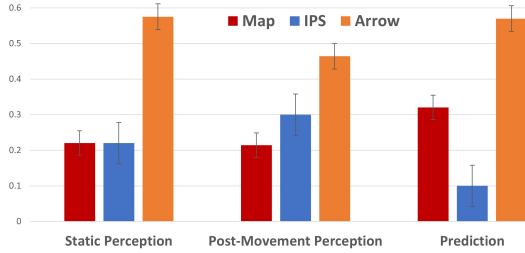


Fig. 11: Accuracy (via a distance metric) in estimation tasks.

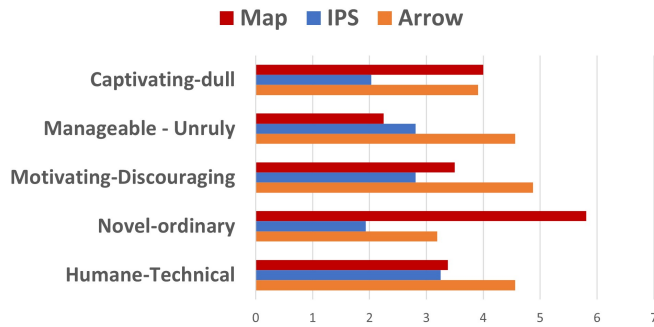


Fig. 12: AttrakDiff survey results.

3) *Attractiveness*: AttrakDiff evaluated the attractiveness of the robot with different methods. The result is presented in Fig. 12. Results indicate that the robot with IPS was viewed as more attractive than the robot with the baselines ($H3$). In particular, participants were much more motivated to work with the robot when using IPS than the baselines (i.e., *Captivating* and *Novel*). We interpreted it as the participants felt IPS provided a more immersive teaming experience than the baselines (see 4) below), thus encouraging them to be more responsive to the robot. Albeit being more novel, as a method of implicit communication, IPS drew no more attention than the baselines, which was reflected by the result showing that the participants considered IPS and Map comparable in manageability (part of $H1$). Given our frequent exposure to various forms of maps in real life, this result is encouraging. Overall, it is observed that IPS obtained the best ratings among almost all features. We averaged the values and ran a Student’s paired t-test. The results were $t(16)=2.12$, $p < .001$ between IPS ($M=2.59$, $SD=0.84$) and Map ($M=3.76$, $SD=0.60$), and $t(16)=2.13$, $p < .001$ between IPS ($M=2.59$, $SD=0.84$) and Arrow ($M=4.31$, $SD=0.79$).

4) *Partnership and Naturalness*: We explicitly asked the participants to indicate which of the three methods gave them a feeling of partnership. 75% of the participants indicated that IPS gave them the feeling that the robot was a work

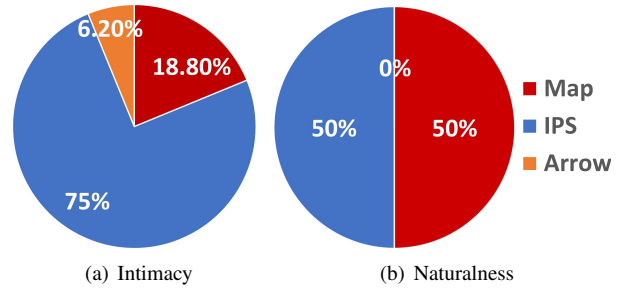


Fig. 13: Results of the participants’ (a) feeling of the robot as a work partner and (b) feeling of naturalness of interaction.

partner. 18.8% felt towards Map and only 6.2% towards Arrow. Fig. 13(a) shows the results. This result verifies that the robot with IPS was viewed more favorably as a work partner ($H3$). Finally, we asked the participants to indicate which methods they felt the most natural. 50% answered Map while the remaining 50% felt towards IPS. This was somewhat surprising since maps had been an integrated part of our lives while IPS was a novel human-robot interface to the participants. The choice of virtual shadows clearly helped IPS achieve a comparable performance here.

VI. CONCLUSIONS AND DISCUSSIONS

In this paper, we introduced implicit projection via virtual shadows (IPS) for tacit HRI. We showed that IPS improved TSA and responsiveness to robots in a proximal HRI scenario. We addressed the challenges in realizing IPS in four steps: shadow mapping, shadow projection, shadow smoothing, and shadow rendering. IPS represents the class of implicit visual communication methods, which contrast with prior visual communication methods that are predominantly explicit. Results also showed IPS incurring comparable cognitive and attention demands with the best explicit projection baselines studied. To the best of our knowledge, IPS is the first work that considers implicit visual communication and bridges an important gap in visual communication. IPS will have a variety of applications involving proximal HRI scenarios where tacit teaming is desired. An interesting extension of IPS is to project the future state of the robot, which can be used to proactively facilitate teaming activities [42].

In future work, we plan to gradually relax the assumptions we made. The first of these assumptions is that the human teammate would not change his viewing direction during the task. Although our approach is expected to work with slight changes in the viewing direction, for sudden and abrupt changes, the shadow could be thrown out of the field of view. Such a problem can be addressed by allowing the shadows to temporarily stay out of the view to avoid flickering and gradually reenter the view. We will explore different control methods to enable smooth transitions. Another assumption that the robot always stays behind can be relaxed in a similar way by enabling smooth transitions for the robot to move from behind the human to the front. Another limitation of IPS is that it requires the environment to be scanned and mapped. This could pose a problem with a frequently changing environment. We will address this in future work.

ACKNOWLEDGMENT: This research is supported in part by the NSF grant 2047186 and the AFOSR grant FA9550-18-1-0067.

REFERENCES

- [1] Harley Oliff, Ying Liu, Maneesh Kumar, Michael Williams, and Michael Ryan. Reinforcement learning for facilitating human-robot interaction in manufacturing. *Journal of Manufacturing Systems*, 56:326 – 340, 2020.
- [2] Guy Hoffman. Evaluating fluency in human-robot collaboration. *IEEE Transactions on Human-Machine Systems*, 49(3):209–218, 2019.
- [3] Nancy J. Cooke, Jamie C. Gorman, Christopher W. Myers, and Jasmine L. Duran. Interactive team cognition. *Cognitive Science*, 37(2):255–285, 2013.
- [4] Nikolaos Mavridis. A review of verbal and non-verbal human-robot interactive communication. *Robotics and Autonomous Systems*, 63:22–35, 2015.
- [5] Brian Gleeson, Karon MacLean, Amir Haddadi, Elizabeth Croft, and Javier Alcazar. Gestures for industry intuitive human-robot communication from human observation. In *2013 8th ACM/IEEE International Conference on Human-Robot Interaction (HRI)*, pages 349–356. IEEE, 2013.
- [6] Terrence Fong, Charles Thorpe, and Charles Baur. Collaboration, dialogue, human-robot interaction. In *Robotics research*, pages 255–266. Springer, 2003.
- [7] L Schomaker. A taxonomy of multimodal interaction in the human information processing system, 1995. Met lit. opg.
- [8] Francesco Osti, Gian Maria Santi, and Gianni Caligiana. Real time shadow mapping for augmented reality photorealistic rendering. *Applied Sciences*, 9(11), 2019.
- [9] Harry T Reis, Michael R Maniaci, Peter A Caprariello, Paul W Eastwick, and Eli J Finkel. Familiarity does indeed promote attraction in live interaction. *Journal of personality and social psychology*, 101(3):557, 2011.
- [10] R. S. Andersen, O. Madsen, T. B. Moeslund, and H. B. Amor. Projecting robot intentions into human environments. In *2016 25th IEEE International Symposium on Robot and Human Interactive Communication (RO-MAN)*, pages 294–301, 2016.
- [11] Andrew Boateng and Yu Zhang. Virtual shadow rendering for maintaining situation awareness in proximal human-robot teaming. In *Companion of the 2021 ACM/IEEE International Conference on Human-Robot Interaction*, pages 494–498, 2021.
- [12] Marwan A. Jarrah. Explicit-implicit distinction: A review of related literature. *Advances in Language and Literary Studies*, 7(1):175–184, 2016.
- [13] Cynthia Breazeal, Cory D Kidd, Andrea Lockerd Thomaz, Guy Hoffman, and Matt Berlin. Effects of nonverbal communication on efficiency and robustness in human-robot teamwork. In *IROS*, pages 708–713. IEEE, 2005.
- [14] Yuhang Che, Allison M Okamura, and Dorsa Sadigh. Efficient and trustworthy social navigation via explicit and implicit robot-human communication. *IEEE Transactions on Robotics*, 36(3):692–707, 2020.
- [15] Anca D Dragan, Kenton CT Lee, and Siddhartha S Srinivasa. Legibility and predictability of robot motion. In *HRI*, pages 301–308. IEEE, 2013.
- [16] Yu Zhang, Sarath Sreedharan, Anagha Kulkarni, Tathagata Chakraborti, Hankz Hankui Zhuo, and Subbarao Kambhampati. Plan explicability and predictability for robot task planning. In *2017 IEEE international conference on robotics and automation (ICRA)*, pages 1313–1320. IEEE, 2017.
- [17] Ze Gong and Yu Zhang. Explicable policy search. *Advances in Neural Information Processing Systems*, 35:38859–38872, 2022.
- [18] Edoardo Lombardi Vallauri, Federica Cominetti, and Viviana Masia. The persuasive and manipulative power of implicit communication. *Journal of Pragmatics*, 197:1–7, 08 2022.
- [19] Igor Baranovski, Stevan Stankovski, Gordana Ostojic, Sabolč Horvat, and Srdjan Tegeltija. Augmented reality support for self-service automated systems. *Journal of graphic engineering and design*, 11:63–68, 06 2020.
- [20] Mehdi Mekni and Andre Lemieux. Augmented reality: Applications, challenges and future trends. *Applied computational science*, 20:205–214, 2014.
- [21] M. A. Livingston. An augmented reality system for military operations in urban terrain. *IITSEC2002, Dec.*, 2002.
- [22] Julien Pilet, Vincent Lepetit, and Pascal Fua. Fast non-rigid surface detection, registration and realistic augmentation. *International Journal of Computer Vision*, 76, 02 2008.
- [23] Mustafa Sirakaya and Didem Alsancak Sirakaya. Trends in educational augmented reality studies: A systematic review. *Malaysia online journal of educational technology*, 6(2):60–74, 2018.
- [24] S.J Henderson and S Feiner. Evaluating the benefits of augmented reality for task localization in maintenance of an armored personnel carrier turret. *ISMAR*, pages 135–144, 2009.
- [25] Carolien Kamphuis, Esther Barsom, Marlies Schijven, and Noor Christoph. Augmented reality in medical education? *Perspectives on medical education*, 3(4):300–311, September 2014.
- [26] Yolanda Vazquez-Alvarez, Ian Oakley, and Stephen A Brewster. Auditory display design for exploration in mobile audio-augmented reality. *Personal and Ubiquitous Computing*, 16:987–999, 2012.
- [27] George Michalos, Panagiotis Karagiannis, Sotiris Makris, Önder Tokçalar, and George Chryssolouris. Augmented reality (ar) applications for supporting human-robot interactive cooperation. *Procedia CIRP*, 41:370 – 375, 2016. Research and Innovation in Manufacturing: Key Enabling Technologies for the Factories of the Future - Proceedings of the 48th CIRP Conference on Manufacturing Systems.
- [28] Sonia Mary Chacko and Vikram Kapila. An augmented reality interface for human-robot interaction in unconstrained environments. In *2019 IEEE/RSJ International Conference on Intelligent Robots and Systems (IROS)*, pages 3222–3228, 2019.
- [29] Sotiris Makris, Panagiotis Karagiannis, Spyridon Koukas, and Aleksandros-Stereos Matthaikiakis. Augmented reality system for operator support in human-robot collaborative assembly. *CIRP Annals*, 65(1):61–64, 2016.
- [30] Sotiris Aivaliotis, Konstantinos Lotsaris, Christos Gkournelos, Nikolaos Fourtakas, Spyridon Koukas, Niki Kousi, and Sotiris Makris. An augmented reality software suite enabling seamless human robot interaction. *International Journal of Computer Integrated Manufacturing*, 36(1):3–29, 2023.
- [31] Jun Rong Jeffrey Neo, Andrea Stevenson Won, and Mardelle McCuskey Shepley. Designing immersive virtual environments for human behavior research. *Frontiers in Virtual Reality*, 2, 2021.
- [32] Yang Wang and Dimitris Samaras. Estimation of multiple directional light sources for synthesis of augmented reality images. *Graphical Models*, 65(4):185 – 205, 2003.
- [33] Ayoung Hong, Burak Zeydan, Samuel Charreyron, Olgac Ergeneman, Salvador Pane, M. Toy, Andrew Petruska, and Brad Nelson. Real-time holographic tracking and control of microrobots. *IEEE Robotics and Automation Letters*, 2:1–1, 01 2017.
- [34] Niki Kousi, Christos Stoubos, Christos Gkournelos, George Michalos, and S. Makris. Enabling human robot interaction in flexible robotic assembly lines: an augmented reality based software suite. *Procedia CIRP*, 81:1429–1434, 01 2019.
- [35] Dylan Moore and Wendy Ju. Sound as implicit influence on human-robot interactions. In *Companion of the 2018 ACM/IEEE International Conference on Human-Robot Interaction, HRI '18*, page 311–312, New York, NY, USA, 2018. Association for Computing Machinery.
- [36] Roxana Agrigoroaie and Adriana Tapus. Influence of robot's interaction style on performance in a stroop task. In *Social Robotics*, pages 95–104. Springer International Publishing, 2017.
- [37] Microsoft. Unity - manual: Shadows. 2015.
- [38] Manuel Beschi, Riccardo Adamini, Alberto Marini, and Antonio Visioli. Using of the robotic operating system for pid control education. *IFAC-PapersOnLine*, 48(29):87–92, 2015. IFAC Workshop on Internet Based Control Education IBCE15.
- [39] Jared Hamilton, Thao Phung, and Tom Williams. What's the point? tradeoffs between effectiveness and social perception when using mixed reality to enhance gesturally limited robots. 03 2021.
- [40] Michael Walker, Hooman Hedayati, Jennifer Lee, and Daniel Szafir. Communicating robot motion intent with augmented reality. pages 316–324, 02 2018.
- [41] Michael Coovert, Tiffany Lee, Ivan Shindeev, and Yu Sun. Spatial augmented reality as a method for a mobile robot to communicate intended movement. *Computers in Human Behavior*, 34:241–248, 05 2014.
- [42] Ze Gong and Yu Zhang. Behavior explanation as intention signaling in human-robot teaming. In *2018 27th IEEE International Symposium on Robot and Human Interactive Communication (RO-MAN)*, pages 1005–1011. IEEE, 2018.